

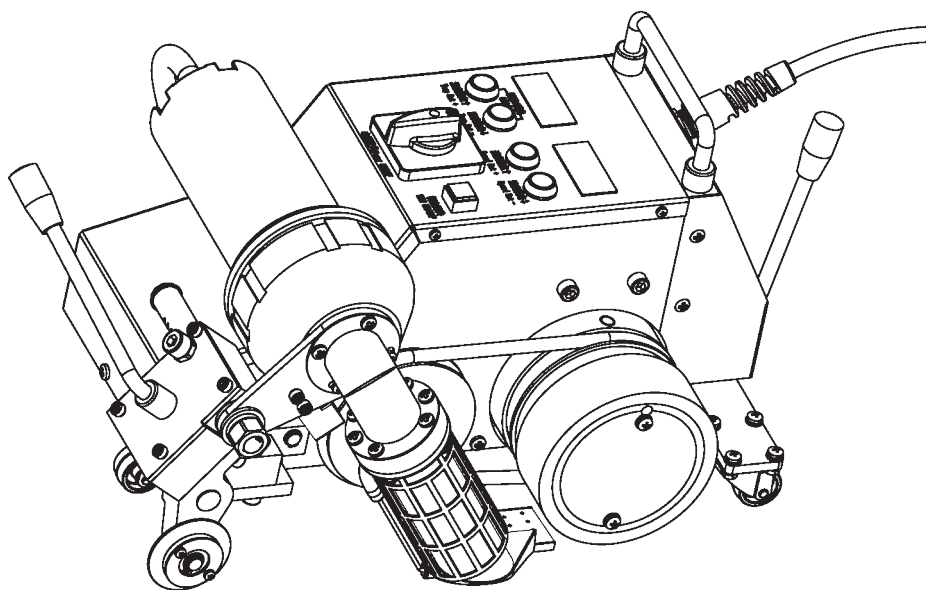


Lesite Technology

LST-UME

Banner & Tarpaulin Welder

Manual





Please read this manual carefully before using this machine, and keep it for future reference.

Provide practical and high-quality equipment and application solutions for the splicing and production of advertising printing, fast soft doors, awnings, tents, inflatable castles, plastic products, etc.

应用范围

- Splicing and production of advertising printing
- car tents
- automobile transportation
- tents
- membrane structures
- inflatable castles
- open-air storage
- plastic



Precautions



Please confirm that the machine is turned off and unplugged before disassembling the welding machine, so as not to be injured by live wires or components inside the machine.



The welding machine generates high temperature and high heat, which may cause fire or explosion when used incorrectly,



especially when it is close to combustible materials or explosive gas. Please do not touch the hot wedge (during welding work or when the welding machine has not completely cooled down) so as not to burn.



The power supply voltage must match the rated voltage marked on the welding machine and be reliably grounded. Connect the welding machine to a socket with a protective ground conductor.



In order to ensure the safety of the operators and the reliable operation of the equipment, the power supply at the construction site must be equipped with a regulated power supply and a leakage protector.




The welding machine must be operated under the correct control of the operator, otherwise it may cause combustion or explosion due to high temperature.



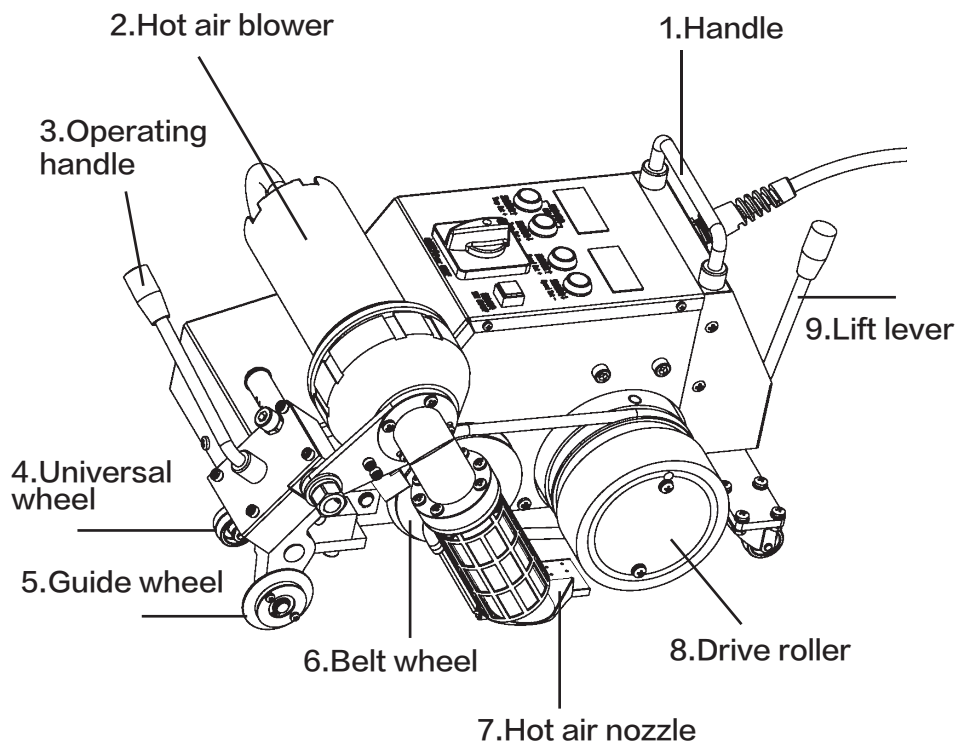
It is strictly forbidden to use the welding machine in water or muddy ground, avoid soaking, rain or damp.

Parameter

Model	LST-UME
Rated Voltage	230 V / 120 V
Frequency	50 / 60 Hz
Rated Power	2800 W / 2200 W
Welding Speed	1.5 - 10.0 m/min
Heating Temperature	50 - 620 °C
Seam Width	20 / 30 / 40 mm
Net Weight	12.5 Kg
Motor	Brush
Certificate	CE
Warranty	One year

Model	LST-UME 
Rated Voltage	230 V / 120 V
Frequency	50 / 60 Hz
Rated Power	2800 W / 2200 W
Welding Speed	1.5 - 10.0 m/min
Heating Temperature	50 - 620 °C
Seam Width	20 / 30 / 40 mm
Net Weight	12.5 Kg
Motor	Brushless
Certificate	CE
Warranty	One year

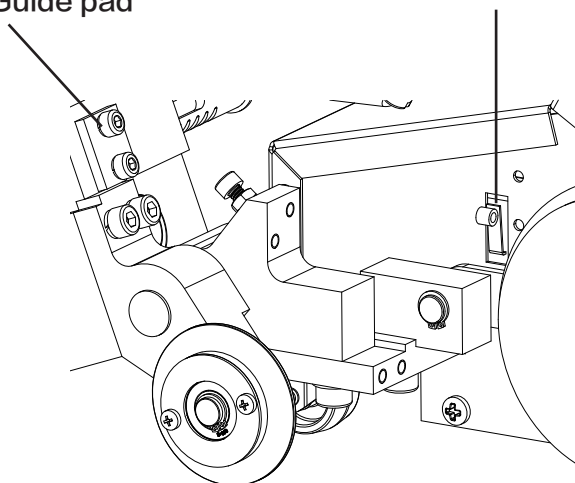
Main Parts



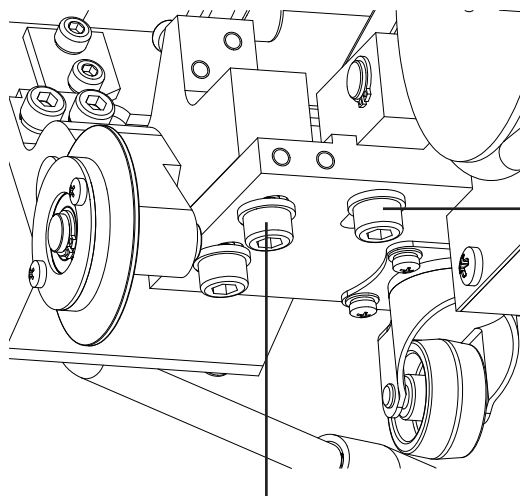
Main Parts

10. Guide pad

11. Micro switch

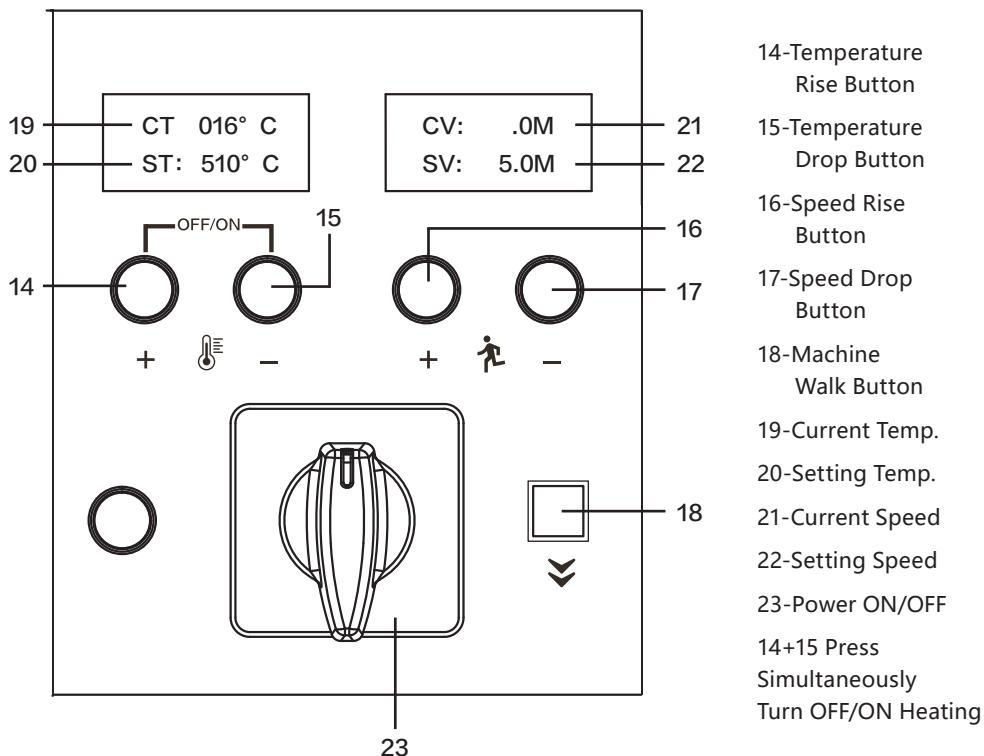


13. Driver roller
adjusting screw




12. Hot air nozzle adjusting nut


Control Panel



1.Welding temperature:

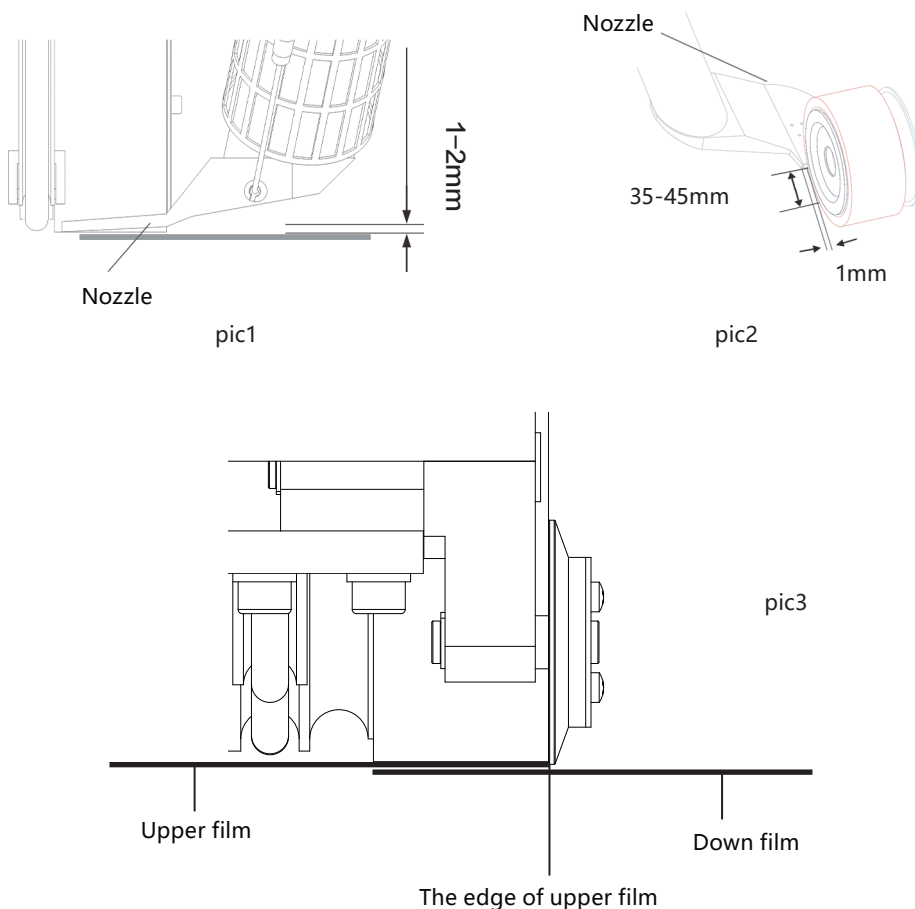
Using bottoms +  - to set the required temperature. You can set the temperature according to the welding materials and the ambient temperature. LCD display screen will show the setting temperature and the current temperature.

2. Welding speed:

Using bottoms +  - to set the required speed according to the welding temperature. LCD display will show the setting speed and the current speed.

- The machine has a memory function parameters, namely when you use the welder next time, the welder will automatically use the last setting parameters without having to re-set parameters.

Welding Nozzle Setting



1. The distance between the air nozzle and the ground should be shown in pic1 (the distance has been adjusted before delivery).
2. The distance between the air nozzle and the pressure wheel should be as shown in pic2 and pic3 (the distance has been adjusted before delivery). If the distance is not correct, loosen the fixing screws below the air gun fixing base (left)(14) and the air gun fixing base (right)(15) for adjustment.
3. The tape welding should be installed as shown in pic3.

Boot/Shutdown Steps

Current Temp.

CT 016°C
ST - Pause

CV: .0M
SV: 5.0M

Current Speed

Current Speed

① Turn on the machine, and the LCD display screens are shown as above. At this time, the air blower does not heat and is in the state of blowing natural wind.

Current Temp.

CT: 510°C
ST: 510°C

Setting Temp.

CV: .0M
SV: 5.0M

Current Speed

Current Speed

② Press the buttons Temperature Rise (14) and Temperature Drop (15) at the same time. At this time, the air blower starts to heat up to the setting temperature. When the current temperature reach the setting temperature, press button Speed Rise (16) to set speed. The LCD screens are shown as above.

Current Temp.

CT: 510°C
ST: 510°C

Setting Temp.

CV: 5.0M
SV: 5.0M

Current Speed

Current Speed

③ Pull up the Blower Location Handle, raise the Hot Air Blower, lower the Welding Nozzle to make it close to the lower membrane, move the air blower to the left to insert the welding nozzle into the membranes and make the welding nozzle in place, At this time, the welding machine automatically walks for welding. The LCD screens are shown above.

④ Pay attention to the position of the Guide Wheel at all times. If the position deviates, you can touch the Operating Handle to adjust.

Current Temp.

CT 016°C
ST - Pause

CV: .0M
SV: 5.0M

Current Speed

Current Speed

⑤ After completing the welding work, remove the welding nozzle and return to the initial position, and press the buttons Temperature Rise and Temperature Drop on the control panel at the same time to turn off the heating. At this time, the hot air blower stops heating and is in cold air standby mode while allowing the welding nozzle to cool down after waiting for the temperature to drop to 60°C, and then turn off the power switch.

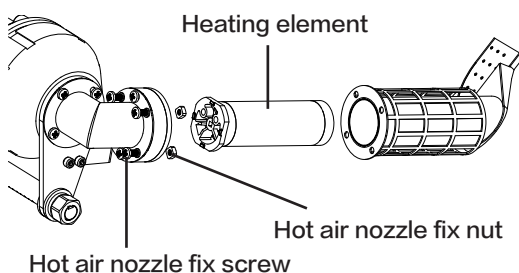
Error Code

Error Code	Description	Measures
"Error T002"	No thermocouple detected	a.Check thermocouple connection b.Replace thermocouple
"Error S002"	No heating element detected	a.Check heating element connection b.Replace heating element
"CT:999 Err-T001"	Thermocouple failure in operation	a.Check thermocouple connection b.Replace thermocouple
"Error FANerr"	Overheating	a.Check hot air blower b.Clean nozzle and filter

Parts Replacement

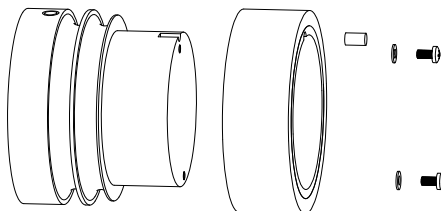
● Replacement of heating element

Unplug the thermocouple connector ,Loosen the four fixing screws of nozzle. Then you can remove the heating element after removing the nozzle As shown on the right



● Replacement of Drive silica roller

Loosen Drive silica roller fixed screw , and then you can take down drive silica roller , As shown on the right



Nameplate



BANNER WELDER

Model : LST-UME

Power : 2800W

Speed : 1.5-10.0m/min

Net Weight : 12.5 KG

Voltage : 230V

Temperature : 50-620°C

Welding Seam : 2/3/4cm

SN : See Machine Frame

Fuzhou Lesite Plastics Welding Technology Co., LTD

www.lesiteweld.com

info@lesite.com.cn



BANNER WELDER BL MOTOR

Model : LST-UME

Power : 2800W

Speed : 1.5-10.0m/min

Net Weight : 12.5 KG

Voltage : 230V

Temperature : 50-620°C

Welding Seam : 2/3/4cm

SN : See Machine Frame

Fuzhou Lesite Plastics Welding Technology Co., LTD

www.lesiteweld.com

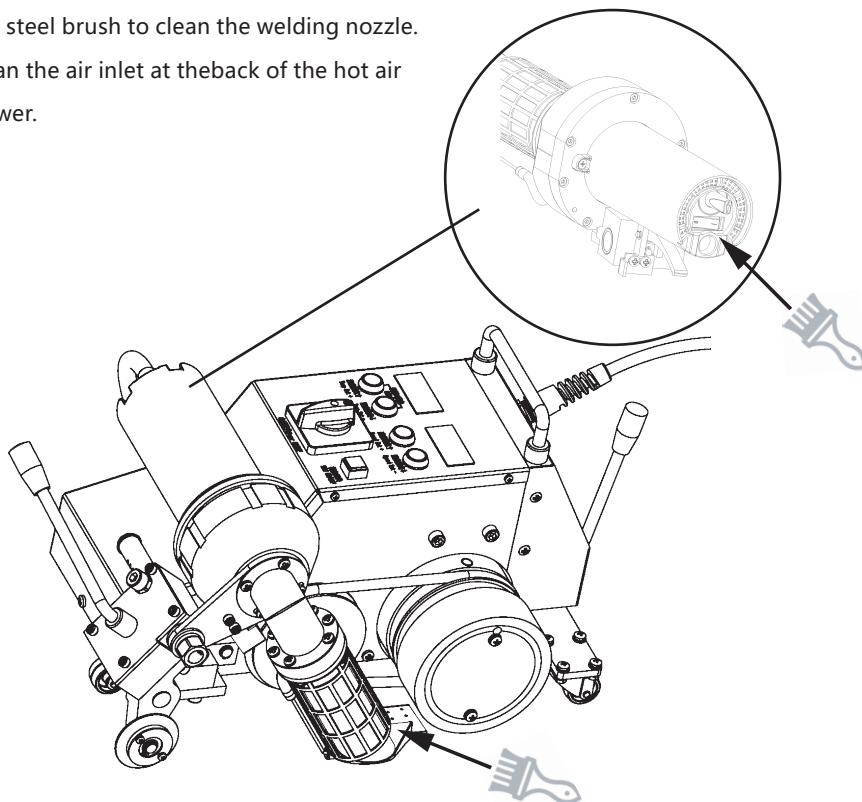
info@lesite.com.cn



Daily Maintenance

Use steel brush to clean the welding nozzle.

Clean the air inlet at the back of the hot air blower.



Quality Assurance

- This product guarantees a 12-month shelf life from the day it is sold to consumers. We will be responsible for failures caused by material or manufacturing defects. We will repair or replace defective parts at our sole discretion to meet the warranty requirements.
- The quality assurance does not include damage to wearing parts (heating elements, carbon brushes, bearings, etc.), damage or defects caused by improper handling or maintenance, and damage caused by falling products. Irregular use and unauthorized modification should not be covered by the warranty.

Maintenance

- It is strongly recommended to send the product to Lesite company or authorized repair center for professional inspection and repair.
- Only original Lesite spare parts are allowed.





FUZHOU LESITE PLASTICS WELDING TECHNOLOGY CO.,LTD

Tel: +86(591)83818890

E-mail: info@lesite.com.cn

Web: www.lesiteweld.com

Add: 5# Jingpu Road, Pushang Industry Park,
Cangshan, Fuzhou, 350007, Fujian, China