

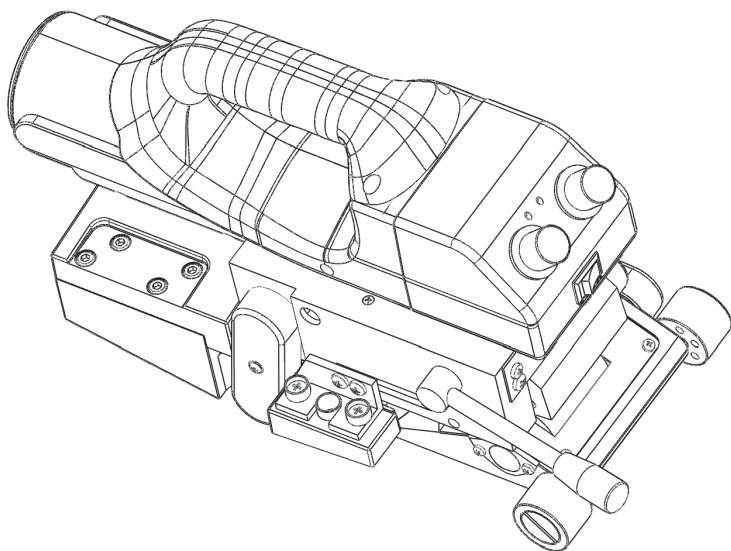


Lesite Technology

LST800/800D

Geo Hot Wedge Welder

Manual





Please read this manual carefully before using this machine, and keep it for future reference.

This machine adopts an advanced hot wedge structure, which has better heating efficiency and faster welding speed. It is specially for welding 0.2mm-1.5mm HDPE, LDPE, PP, TPO, PVC.

Application

- Solid Waste Landfills
- Sewage Treatment
- Anti-Seepage Project
- Chemical Mining
- Water Conservancy
- Aquaculture



Precautions



Please confirm that the machine is turned off and unplugged before disassembling the welding machine, so as not to be injured by live wires or components inside the machine.



The welding machine generates high temperature and high heat, which may cause fire or explosion when used incorrectly, especially when it is close to combustible materials or explosive gas.



Please do not touch the hot wedge (during welding or when the welding machine has not completely cooled down) so as not to burn.



The power supply voltage must match the rated voltage marked on the welding machine and be reliably grounded. Connect the welding machine to a socket with a protective ground conductor.



In order to ensure the safety of the operators and the reliable operation of the equipment, the power supply at the construction site must be equipped with a regulated power supply and a leakage protector.



The welding machine must be operated under the correct control of the operator, otherwise it may cause combustion or explosion due to high temperature.



It is strictly forbidden to use the welding machine in water or muddy ground, avoid soaking, rain or damp.

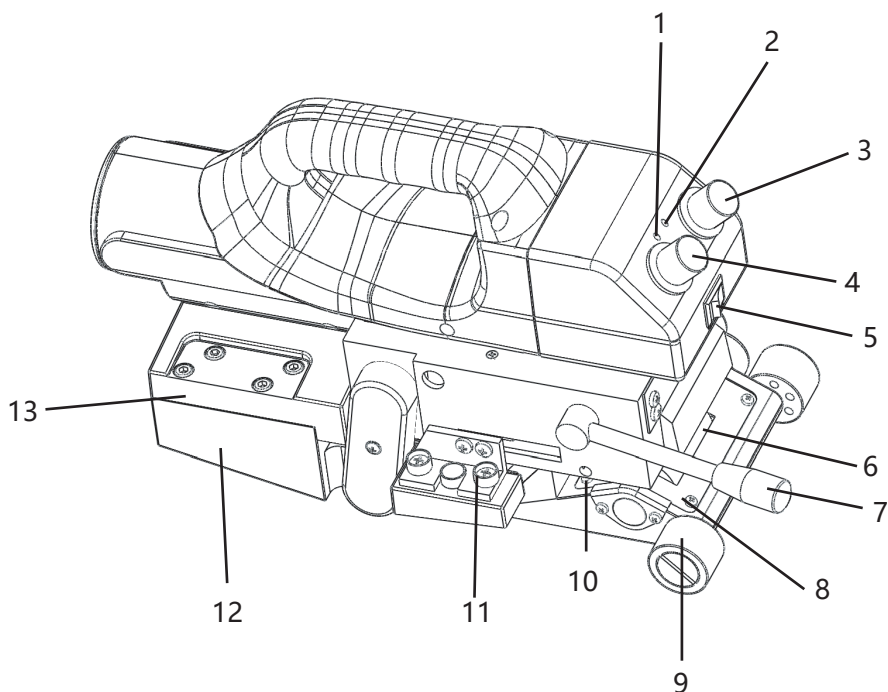
Parameter

Model	LST800
Rated Voltage	230 120 V
Frequency	50 / 60 Hz
Rated Power	800 / 1000 W 800 W
Welding Speed	0.5 - 5 m/min
Heating Temperature	50 - 450 °C
Material Thickness Welded	0.2 mm - 1.5 mm
Overlap Width	10cm
Seam Width	12.5mm*2 cavity 12 mm
Seam Strength	≥ 85 % Material
Net Weight	5Kg
Digital Display	/
Certificate	CE
Warranty	One Year

Parameter

Model	LST800D
Rated Voltage	230 120 V
Frequency	50 / 60 Hz
Rated Power	800 / 1000 W 800 W
Welding Speed	0.5 - 5 m/min
Heating Temperature	50 - 450 °C
Material Thickness Welded	0.2mm-1.5mm
Overlap Width	10cm
Seam Width	12.5mm*2 cavity 12mm
Seam Strength	≥ 85 % Material
Net Weight	5Kg
Digital Display	.
Certificate	CE
Warranty	One Year

Main Parts



1、Power Indicator

2、Heating Indicator

3、Speed Control Knob

4、Temperature Control Knob

5、Power Switch

6、Upper Pressure Roller Frame

7、Pressure Handle

8、Lower Pressure Roller

9、Rear Casters

10、Hot Wedge

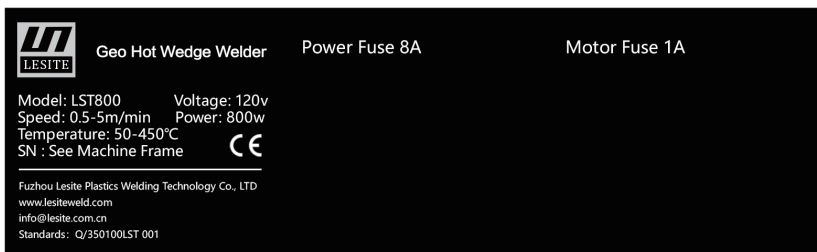
11、Stand

12、Lower Rack

13、Upper Rack

Nameplate

The model identification and serial number identification are marked on the nameplate of the machine.
Please provide these data when consulting Lesite Sales and Service Center.



Boot Steps

- 1、Connect the power supply, lift the pressure handle (7) , the pressure roller (8) separate automatically, and press the power switch (5).
- 2、Set the required welding temperature and wait for the temperature to reach the set value (800D digital display one shows it directly).
- 3、Set the speed control knob (3) up to the required scale (800D shows the readings).
- 4、Place the welding machine in the welding position and insert the film material.
- 5、Put down the pressure handle (7), the machine starts welding.
- 6、Do observe the welding seam on membrane. If there is any deviation, adjust on time.
- 7、After welding, lift the pressure handle (7), move the machine away from the welding position.
- 8、Turn off the power switch (11).

Quality Assurance

- This product guarantees a 12-month shelf life from the day it is sold to consumers. We will be responsible for failures caused by material or manufacturing defects. We will repair or replace defective parts to meet the warranty requirements.
- The quality assurance does not include damage to wearing parts (heating elements, carbon brushes, bearings, etc.), damage or defects caused by improper handling or maintenance, and damage caused by falling products. Irregular use and unauthorized modification should not be covered by the warranty.

Standards

The company declares that the products manufactured and marketed by the company meet the requirements of the following enterprise implementation standards.

Standards: Q/350100LST 001.

Repairs and Spare Parts

- It is strongly recommended to send the product to Lesite company or authorized repair center for professional inspection and repair.
- Only original Lesite spare parts are allowed.





FUZHOU LESITE PLASTICS WELDING TECHNOLOGY CO.,LTD



Tel: +86(591)83818890



E-mail: info@lesite.com.cn
Web: www.lesiteweld.com



Add: 5# Jingpu Road, Pushang Industry Park,
Cangshan, Fuzhou, 350007, Fujian, China