



Lesite Technology

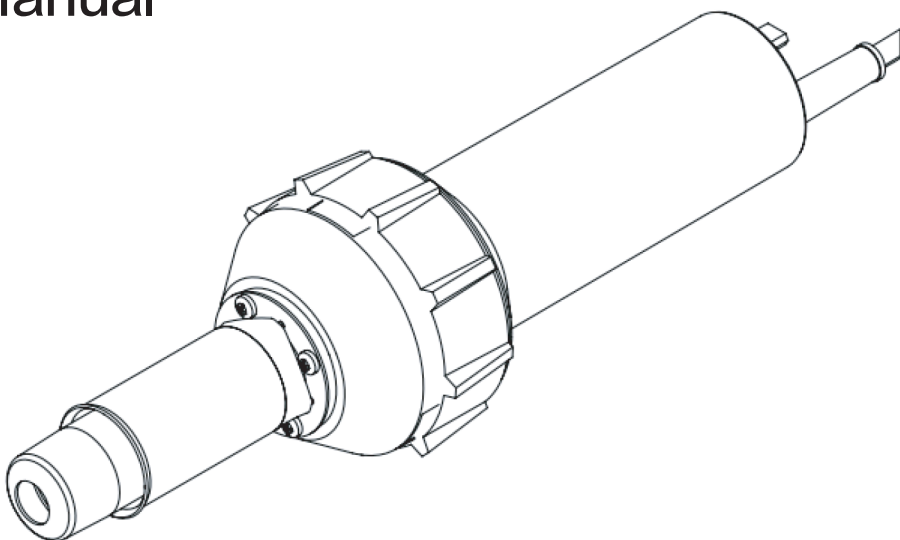
# Hot Air Welding Gun

LST1600

LST3400

LST2000

## Manual





## **Please read this manual carefully before using this machine, and keep it for future reference**

Each hot air gun must undergo a double test of 100% performance and safety before leaving the factory. A variety of nozzles and models can meet different heating applications, and deeply meet the needs of customers.

## **Application**

The following are different applications of hot air gun:

- |  |             |
|--|-------------|
| -Plastic containers                    | -Activate   |
| -TPO, PVC and Bitumen roofing membrane | -Drying     |
| -Welding Tarpaulin and Banner          | -Preheating |
| -Welding PVC floor                     | -Forming    |



## **Precautions**



Please confirm that the machine is turned off and unplugged before disassembling the welding machine, so as not to be injured by live wires or components inside the machine.



The welding machine generates high temperature and high heat, which may cause fire or explosion when used incorrectly, especially when it is close to combustible materials or explosive gas.



Please do not touch the air duct and nozzle(during welding work or when the welding machine has not completely cooled down), and do not face the nozzle to avoid burns.



The power supply voltage must match the rated voltage marked on the welding machine and be reliably grounded. Connect the welding machine to a socket with a protective ground conductor.



In order to ensure the safety of the operators and the reliable operation of the equipment, the power supply at the construction site must be equipped with a regulated power supply and a leakage protector.

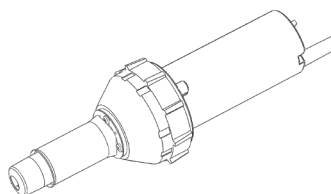


The welding machine must be operated under the correct control of the operator, otherwise it may cause combustion or explosion due to high temperature.

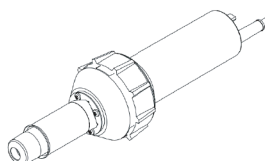


It is strictly forbidden to use the welding machine in water or muddy ground, avoid soaking, rain or damp.

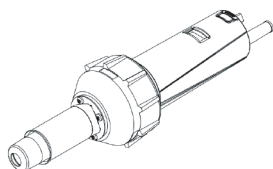
## Product Series



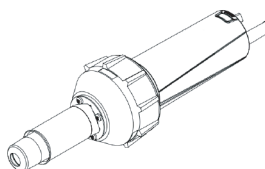
LST1600A



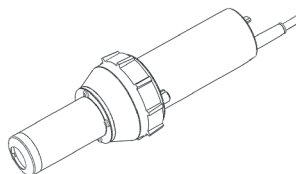
LST1600S



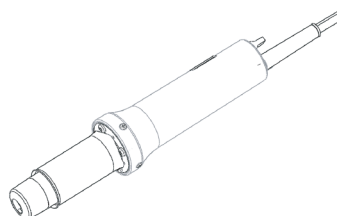
LST1600D



LST1600E



LST3400



LST2000

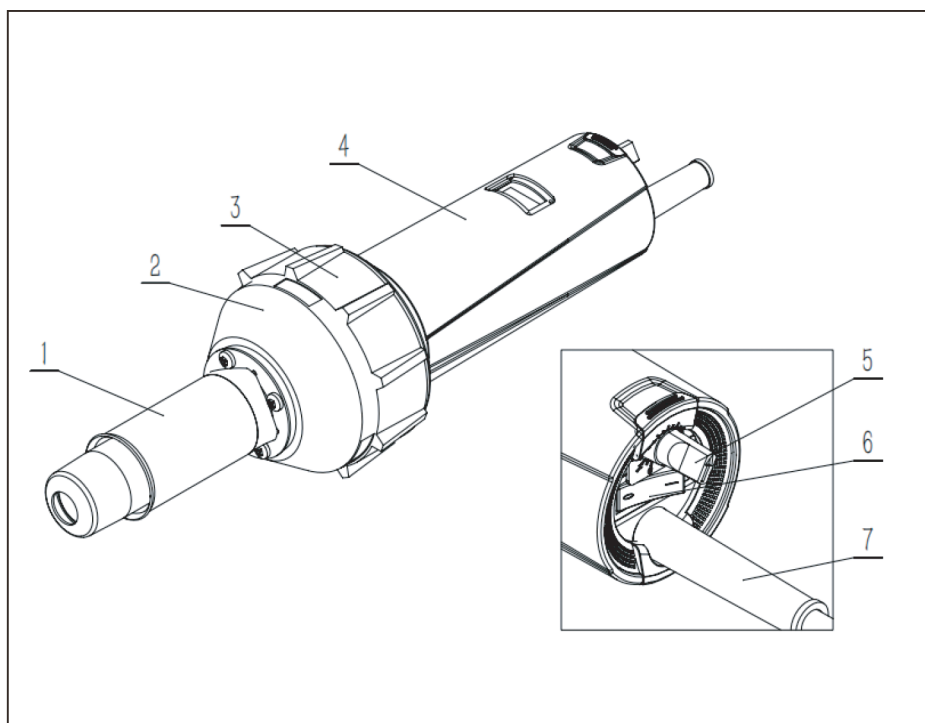
## LST1600 Parameter

Model	<b>LST1600A</b>	<b>LST1600S</b>
Rated Voltage	230 V / 120 V	230 V / 120 V
Frequency	50 / 60 Hz	50 / 60 Hz
Power	1600 W	1600 W
Temperature	20 - 620 °C	20 - 620 °C
Air Volume	Max 180 L/min	Max 180 L/min
Noise	≤ 65 Db	≤ 65 Db
Net Weight	1.1 Kg	1.05 Kg
Motor	Brush	Brush
Handle Dia	φ 65 mm	φ 58 mm
Overheat Protection	Default	Default
Temperature Control	Open loop	Open loop
Certificate	CE	CE
Warranty	One year	One year

Model	<b>LST1600D</b>	<b>LST1600E</b>
Rated Voltage	230 V / 120 V	230 V / 120 V
Frequency	50 / 60 Hz	50 / 60 Hz
Power	1600 W	1600 W
Temperature	20 - 620 °C	20 - 620 °C
Air Volume	Max 180 L/min	Max 180 L/min
Noise	≤ 65 Db	≤ 65 Db
Net Weight	1.05 Kg	1.05 Kg
Motor	Brush	Brush
Handle Dia	φ 58 mm	φ 58 mm
Overheat Protection	Default	Default
Temperature Control	Closed loop	Open loop
Certificate	CE	CE
Warranty	One year	One year



## LST1600 Main Parts



1、Air Duct

3、Shockproof Pad

5、Potentiometer

7、Power Cord

2、Outer Cover

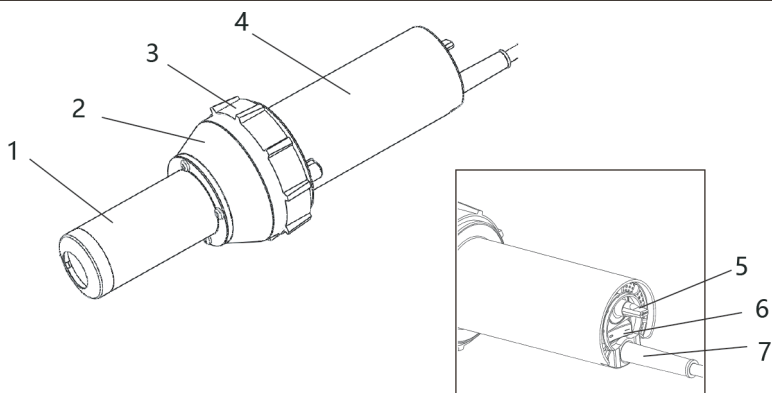
4、Handle

6、Power Switch

## LST3400 Parameter

Mode	<b>LST3400</b>
Rated Voltage	230 V
Frequency	50 / 60 Hz
Power	3400 W
Temperature	20 - 620 °C
Air Volume	Max 360 L/min
Noise	≤ 65 Db
Net Weight	1.2 Kg
Motor	Brush
Handle Dia	φ 65 mm
Overheat Protection	Default
Temperature Control	Open loop
Certificate	CE
Warranty	One year

## LST3400 Main Parts



1、Air Duct

2、Outer Cover

3、Shockproof Pad

4、Handle

5、Potentiometer

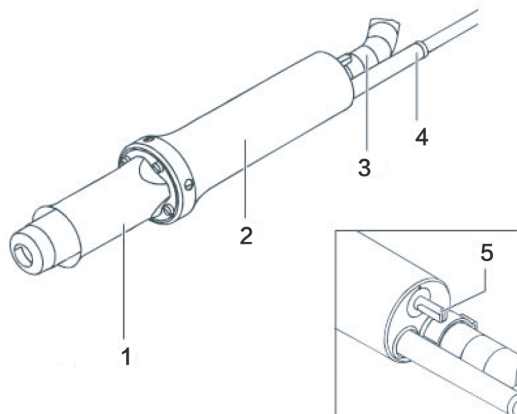
6、Power Switch

7、Power Cord

## LST2000 Parameter

Mode	<b>LST2000</b>
Rated Voltage	230 V / 120 V
Frequency	50 / 60 Hz
Power	1600 W
Temperature	20 - 620 °C
Noise	≤ 65 Db
Net Weight	2.4 Kg
Handle Dia	φ 42 mm
Overheat Protection	Default
Air Tube	3m
Temperature Control	Open loop
Certificate	CE
Warranty	One year

## LST2000 Main Parts



1、Air Duct

2、Handle

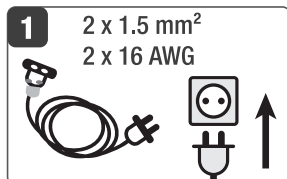
3、Tube Interface

4、Power Cord

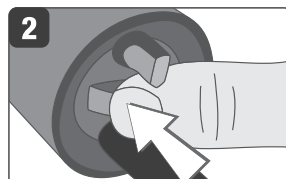
5、Potentiometer

## Operation Steps

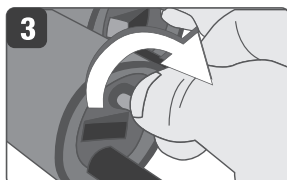
### 1.Start Up



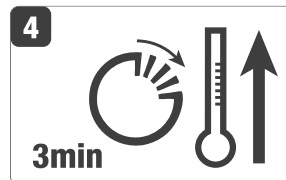
Connect Power Supply



Turn On the Power Switch

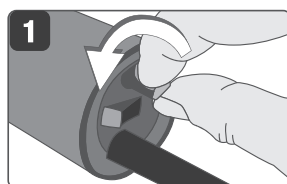


Rotate The Potentiometer Rightward

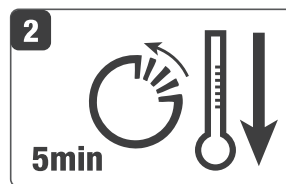


Preheat 3 Minutes

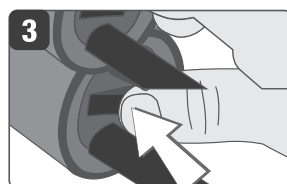
### 2.Shut Down



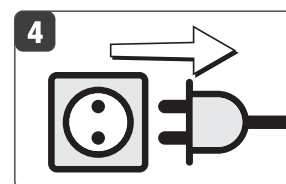
Rotate The Potentiometer Leftward



Twist The Potentiometer to "0"  
Then Wait 5 Minutes

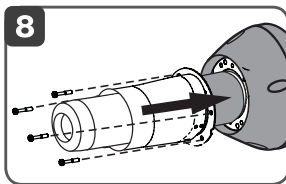
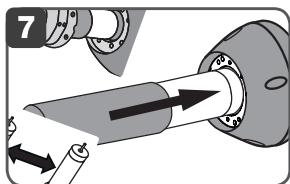
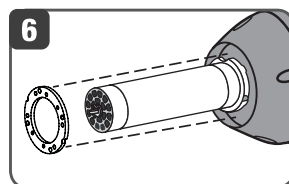
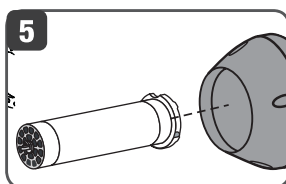
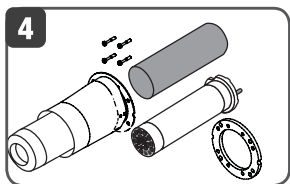
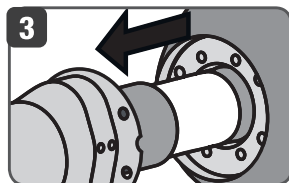
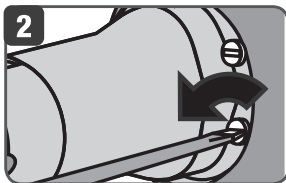
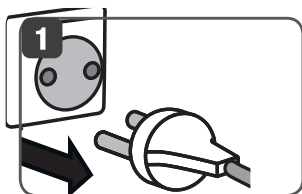


Turn Off The Power Switch

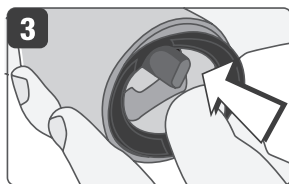
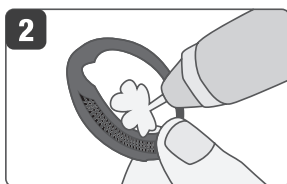
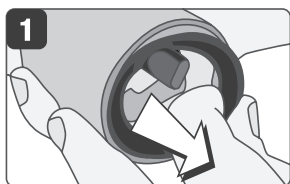


Unplug The Power Cord

## Replacing Heating Element



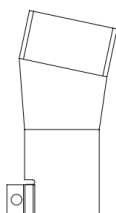
## Cleaning Air Filter



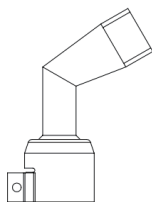
## Welding Nozzles



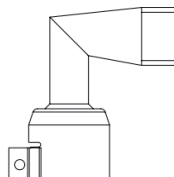
20mm Wide  
Slot Nozzle



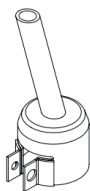
40mm Wide  
Slot Nozzle



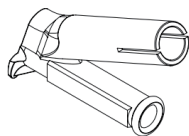
120° Angle  
Nozzle



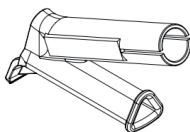
90° Angle  
Nozzle



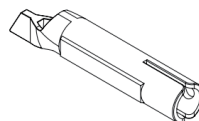
φ5mm  
Tubular Nozzle



Round Speed  
Nozzle



Triangle  
Speed Nozzle



Tacking Nozzle

## Warranty

- This product guarantees a 12-month shelf life from the day it is sold to consumers. We will be responsible for failures caused by material or manufacturing defects. We will repair or replace defective parts at our sole discretion to meet the warranty requirements.
- The quality assurance does not include damage to wearing parts (heating elements, carbon brushes, bearings, etc.), damage or defects caused by improper handling or maintenance, and damage caused by falling products. Irregular use and unauthorized modification should not be covered by the warranty.

## Maintenance

- It is strongly recommended to send the product to Lesite company or authorized repair center for professional inspection and repair.
- Only original Lesite spare parts are allowed.





## FUZHOU LESITE PLASTICS WELDING TECHNOLOGY CO.,LTD



Tel: +86(591)83818890



E-mail: [info@lesite.com.cn](mailto:info@lesite.com.cn)  
Web: [www.lesiteweld.com](http://www.lesiteweld.com)



Add: 5# Jingpu Road, Pushang Industry Park,  
Cangshan, Fuzhou, 350007, Fujian, China