



Please read this manual carefully before using this machine, and keep it for future reference

Each hot air gun must undergo a double test of 100% performance and safety before leaving the factory. A variety of nozzles and models can meet different heating applications, and deeply meet the needs of customers.

Application

The following are different applications of hot air gun:

- Welding of roof polymer membrane and butyl membrane
- Welding of tarpaulin and banner
- Welding of PVC floor
- Processing of thermoplastic rigid materials in the manufacture of plastic containers
- Molding of thermoplastics
- Drying wet surfaces
- Activation and shedding of adhesives and hot melt glue
- All kinds of drying and preheating processes



Precautions



Please confirm that the machine is turned off and unplugged before disassembling the welding machine, so as not to be injured by live wires or components inside the machine.



The welding machine generates high temperature and high heat, which may cause fire or explosion when used incorrectly, especially when it is close to combustible materials or explosive gas.



Please do not touch the air duct and nozzle (during welding work or when the welding machine has not completely cooled down), and do not face the nozzle to avoid burns.



The power supply voltage must match the rated voltage marked on the welding machine and be reliably grounded. Connect the welding machine to a socket with a protective ground conductor.



In order to ensure the safety of the operators and the reliable operation of the equipment, the power supply at the construction site must be equipped with a regulated power supply and a leakage protector.

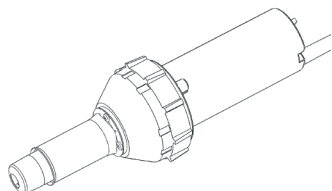


The welding machine must be operated under the correct control of the operator, otherwise it may cause combustion or explosion due to high temperature

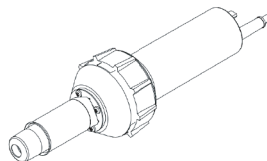


It is strictly forbidden to use the welding machine in water or muddy ground, avoid soaking, rain or damp

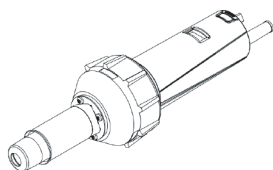
Product Series



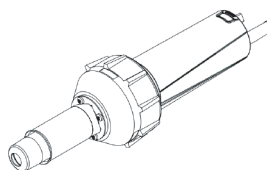
LST1600A



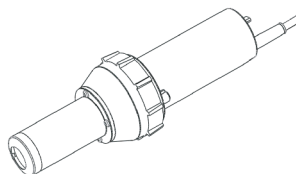
LST1600S



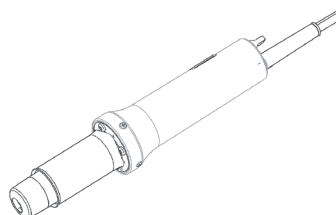
LST1600D



LST1600E



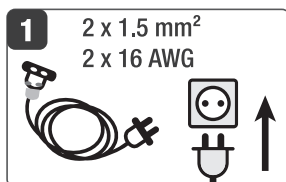
LST3400



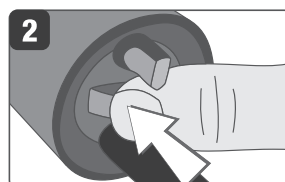
LST2000

Operation steps

1.Start up



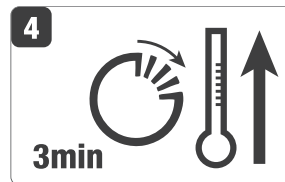
Connect Power Supply



Turn On the Power Switch

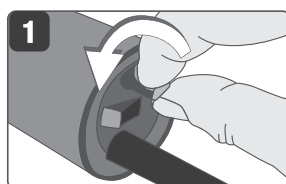


Rotate the Potensiometer Rightward

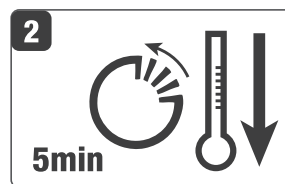


Preheat 3 Minutes

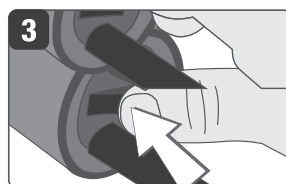
2.Switching off



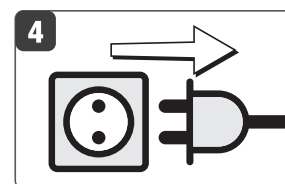
Rotate the Potensiometer Leftward



Twist the Potensiomete to "0"
Then Wait 5 Minutes

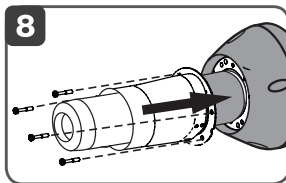
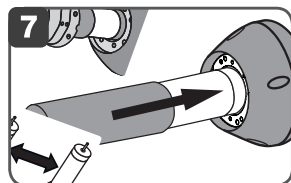
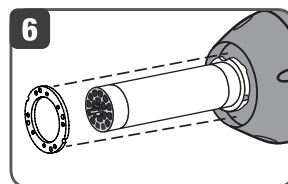
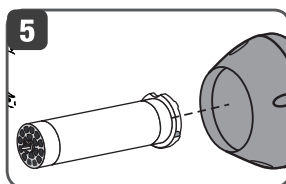
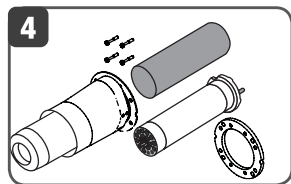
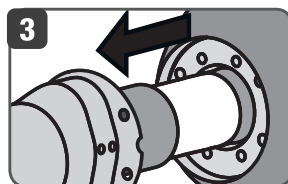
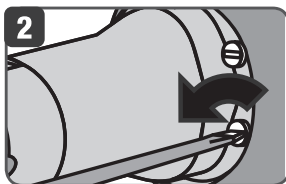
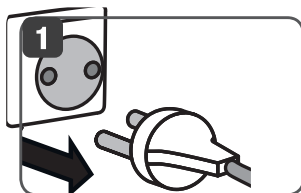


Turn Off the Power Switch

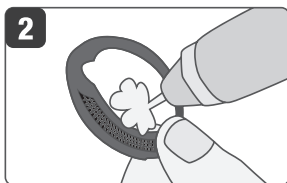


Unplug the Power Cord

Changing heating element



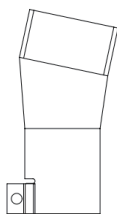
Cleaning air filter



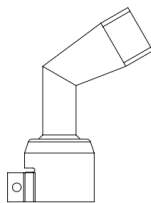
Product accessories



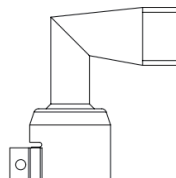
20mm Wide
Slot Nozzle



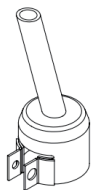
40mm Wide
Slot Nozzle



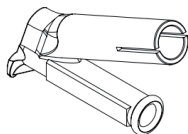
120° Angle
Nozzle



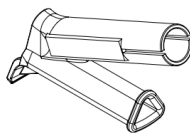
90° Angle
Nozzle



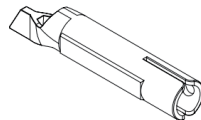
φ5mm
Tubular Nozzle



Round Speed
Nozzle



Triangle
Speed Nozzle



Tacking Nozzle

Quality Assurance

- This product guarantees a 12-month shelf life from the day it is sold to consumers. We will be responsible for failures caused by material or manufacturing defects. We will repair or replace defective parts at our sole discretion to meet the warranty requirements.
- The quality assurance does not include damage to wearing parts (heating elements, carbon brushes, bearings, etc.), damage or defects caused by improper handling or maintenance, and damage caused by falling products. Irregular use and unauthorized modification should not be covered by the warranty.

Repairs and Spare Parts

- It is strongly recommended to send the product to Lesite company or authorized repair center for professional inspection and repair.
- Only original Lesite spare parts are allowed.

