

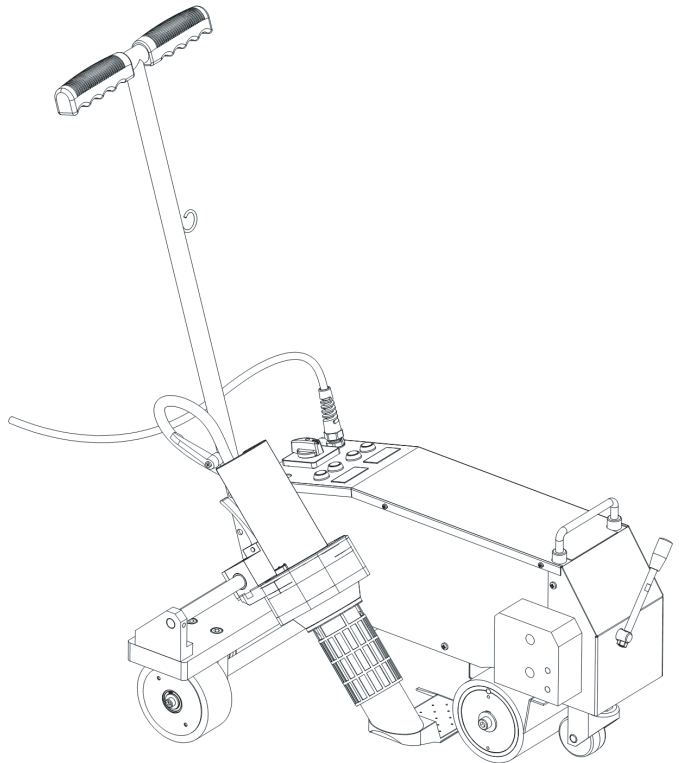


Lesite Technology

LST-WP2

Bitumen Hot Air Welder

Manual





Please read this manual carefully before using this machine, and keep it for future reference

Application

It can be applicable for overlap welding modified SBS bitumen waterproofing film materials.



Precautions



Please confirm that the machine is turned off and unplugged before disassembling the welding machine, so as not to be injured by live wires or components inside the machine.



The welding machine generates high temperature and high heat, which may cause fire or explosion when used incorrectly, especially when it is close to combustible materials or explosive gas.



Please do not touch the air duct and nozzle(during welding work or when the welding machine has not completely cooled down), and do not face the nozzle to avoid burns.



The power supply voltage must match the rated voltage (230V) marked on the welding machine and be reliably grounded. Connect the welding machine to a socket with a protective ground conductor.



In order to ensure the safety of the operators and the reliable operation of the equipment, the power supply at the construction site must be equipped with a regulated power supply and a leakage protector.



The welding machine must be operated under the correct control of the operator, otherwise it may cause combustion or explosion due to high temperature.



It is strictly forbidden to use the welding machine in water or muddy ground, avoid soaking, rain or damp.

LST-WP2 Parameter

Model	LST-WP2
Voltage	230 V
Frequency	50 Hz
Power	4200 W
Welding Speed	1.0 - 10 m/min
Welding Temp	50 - 620 °C
Welding Seam	80 mm
Size(L*W*H)	543×370×320 mm
Weight	36 KG

LST-WP2 Nameplate

The model identification and serial number identification are marked on the nameplate of the machine you choose.

Please provide these data when consulting Lesite Sales and Service Center.



ROOFING HOT AIR WELDER

Model : LST-WP2

Voltage : 230V

Power : 4200W

Temperature : 50-620°C

Speed : 1.0-10m/min

Welding Seam : 80mm

Net Weight : 36 KG

SN : See Machine Frame

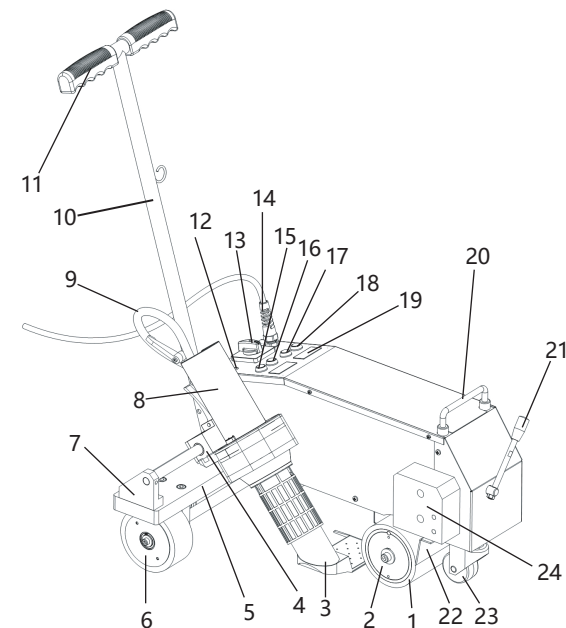
Fuzhou Lesite Plastics Welding Technology Co., LTD

www.lesiteweld.com

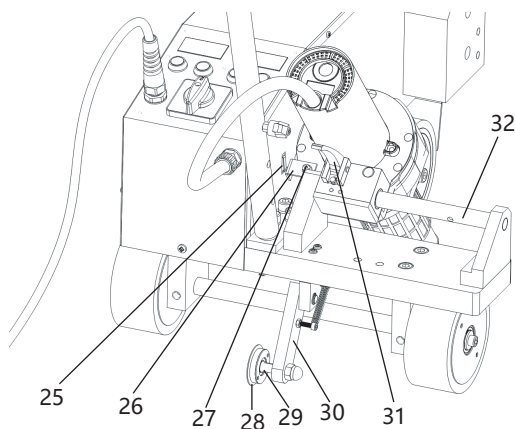
info@lesite.com.cn



LST-WP2 Description

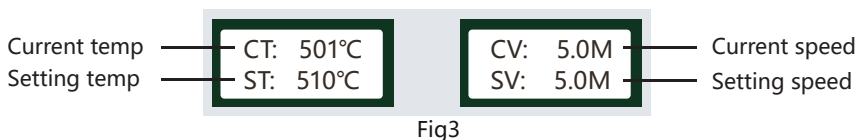
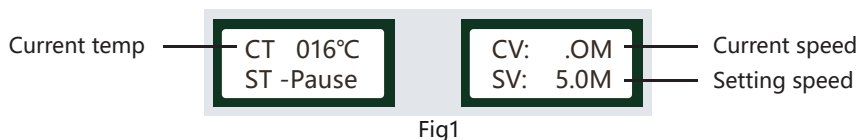


- 1、Pressure Roller
- 2、Drive Roller
- 3、Hot air Nozzle
- 4、Hot Air Blower Fixed Slider
- 5、Machine Frame
- 6、Front Wheel
- 7、Hot Air Blower Fixed Set(Right)
- 8、Hot Air Blower
- 9、Power Wire Of Hot Air Blower
- 10、Guide Bar
- 11、Handle
- 12、Moving Switch
- 13、ON/OFF Switch
- 14、Power Cord
- 15、Temperature Setting Knob (-)
- 16、Temperature Setting Knob (+)
- 17、Speed Setting Knob (-)
- 18、Speed Setting Knob (+)
- 19、LCD Display Screen
- 20、Lift Handle
- 21、Lift Lever
- 22、Scraper
- 23、Universal Wheel
- 24、Clump Weight
- 25、Micro Switch
- 26、Baffle Of Micro Switch
- 27、Adjusting Screw
- 28、Guide Wheel
- 29、Fixed Axle Of Guide Wheel
- 30、Fixed Plate Of Guide Wheel
- 31、Position Handle Of Hot Air Blower
- 32、Guide Rail Of Hot Air Blower



LST-WP2 Controller Panel

- 1, ON/OFF switch (13) is used for open the main power of the welder.
- 2, Open ON/OFF switch (13), LCD display is shown as Figure 1, the hot air blower is under natural wind without heating.
- 3, Press the button (15) and (16), the screen shows as Figure 2 and the hot air blower starts to heat until to the setting temperature.
- 4, If press the bottoms (15) and (16) at the same time, LCD display shows as Figure 1, the hot air blower is under natural wind without heating.
- 5, When the welding nozzle is at the right position, press the moving switch (12) and the welder starts to move and weld. It will stop move if you press the moving switch again.
- 6, When the welder starts to move, the LCD display shows as Figure 3.



1, Welding temperature:

Using bottoms Temperature setting knob+ (17) and Temperature setting knob- (18) on the panel to set the required temperature. You can set the temperature according to the welding materials and the ambient temperature. LCD display will show the set temperature and the current actual temperature.

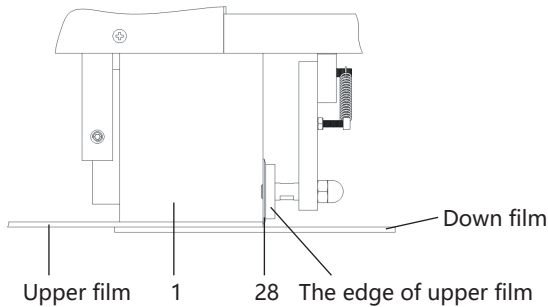
2, Welding speed:

Using bottoms Speed setting knob+ (15) and Speed setting knob - (16) on the panel to set the required speed according to the welding temperature. LCD display will show the set speed and the current actual speed.

- The machine has a memory function parameters, namely when you use the welder next time, the welder will automatically show the last set of parameters without having to re-set parameters.

Positioning The Welder

- 1、 Turn the lift lever (21) counterclockwise to make pressure roller (1) off the ground, move welder to welding position (the edge of upper film should keep in the same alignment with pressure roller (1)), as shown in figure 4.
- 2、 Pressure fixed plate of guide wheel (30) to make guide wheel (28) on the ground, to keep the guide wheel (28) in the same alignment with the edge of upper film.



Welding Process

1. Setting the welding parameters according to the data of welding test.
2. Please wait the actual temperature value reaching the setting value.
3. Positioning the welder.
4. Lift the position handle of hot air blower (31) to lower down the hot air nozzle (3) to close the down ground, to place hot air nozzle to left in the right position. The machine would start walking and welding automatically.
5. To observe the relative position of guide wheel (28). If it deviations from position, you can adjust it by flipping the handle (11)
6. When the welder walks into the end of material, pull up the position handle of hot air blower (31), move out of the hot air nozzle to right until stop, spin it up until lock.
7. After finish the welding job, press the Temperature setting knob+ (17) and Temperature setting knob- (18) to make the hot air blower in a cold blowing condition in order to cool the nozzle.
8. Last step is to off the power.

Quality Assurance

- This product guarantees a 12-month shelf life from the day it is sold to consumers. We will be responsible for failures caused by material or manufacturing defects. We will repair or replace defective parts at our sole discretion to meet the warranty requirements.
- The quality assurance does not include damage to wearing parts (heating elements, carbon brushes, bearings, etc.), damage or defects caused by improper handling or maintenance, and damage caused by falling products. Irregular use and unauthorized modification should not be covered by the warranty.

Repairs And Spare Parts

- It is strongly recommended to send the product to Lesite company or authorized repair center for professional inspection and repair.
- Only original Lesite spare parts are allowed.





FUZHOU LESITE PLASTICS WELDING TECHNOLOGY CO.,LTD



Tel: +86(591)83818890



E-mail: info@lesite.com.cn

Web: www.lesiteweld.com



Add: 5# Jingpu Road, Pushang Industry Park,
Cangshan, Fuzhou, 350007, Fujian, China